



**STRAPPING • CORD • TOOLS • CLOSURES • DISPENSERS**

A large roll of white polyester packaging material, possibly a film or bag, is shown. A prominent green diagonal stripe runs across the material. The text is overlaid on this background.

***HIGH STRENGTH  
POLYESTER PACKAGING  
SOLUTIONS***

***WWW.POLYCHEM.COM***

**WWW.POLYCHEM.COM**



## POLYCHEM CORPORATION

Secure your future with the industries largest selection of high tensile Polyester, Cord and Accessories.

## POLYCHEM POWER TOOLS

- Ergonomic Design
- Battery, Pneumatic & Manual
- Wide Selection for all Applications

## WE ARE A TOTAL SOLUTIONS PROVIDER

Polychem provides a complete system; That's everything from strapping to the largest fully automated integrated systems. We also service what we sell with our regionally based technicians network.

## SUSTAINABILITY

Not only is our polyester strapping green... so is our company. Polychem's polyester strapping is made from 100% recycled polyester (RPET) with 60% or more post consumer content. Our Evergreen Plastics Division is the world's third largest PET recycling plant.

Member of:



**NAPCOR**



The Association of  
Plastic Recyclers

**POLYCHEM'S GOT "SHIPABILITY"™**



# **TABLE OF CONTENTS**

## **POWER TOOLS**

PAGES 4-6

## **HIGH STRENGTH POLYESTER STRAPPING**

PAGE 7

## **HIGH STRENGTH POLYESTER CORD**

PAGES 8-9

## **STEEL CONVERSION**

PAGES 10-12

**COME TO THE SOURCE®**



# FULLY AUTOMATIC BATTERY TOOLS

## INTRODUCING

### **B2000** BATTERY POWERED FRICTION WELD TOOL UP TO: 1¼ in. x .055 PET STRAP



INCLUDES 2 BATTERIES  
OPTIONAL 3/4" STRAP GUIDE AVAILABLE

**PULLS UP TO**  
**2000 lbs**  
**of Tension**

SPECIFICATIONS	
L x W x H	15.7" x 5.9" x 6.3"
WEIGHT	13.8 lbs.
BATTERY	36V, 2.0Ah, Li-Ion
MAX. TENSION	2000 lbs.
TENSION SPEED	4 in/sec
SEALING/JOINT STRENGTH	Friction / 80% of Breaking
RECOMMENDED STRAP SIZE/THICKNESS	1" or 1¼" polyester / .031" - .055"

**33% MORE TENSION**  
Than Comparable Competitors Tools

- **One Button Operation**
- **Lithium Ion Battery**
- **DC Brushless Motors**

### **B1200** BATTERY POWERED FRICTION WELD TOOL UP TO: ¾ in. x .050 PET STRAP or PP STRAP



INCLUDES 2 BATTERIES

**1200 lbs Tension**

SPECIFICATIONS B600	
L x W x H	11.8" x 5.9" x 6.3"
WEIGHT	8.8 lbs.
BATTERY	14.8V-3.0 A/H LI-PO
MAX. TENSION	1200 lbs.
TENSION SPEED	10.4 in/sec
SEALING/JOINT STRENGTH	Friction / 80% of Breaking
RECOMMENDED STRAP SIZE/THICKNESS	5/8" - 3/4" polypropylene or polyester / .031" - .050"

### **B600** BATTERY POWERED FRICTION WELD TOOL UP TO: 5/8 in. x .030 PET STRAP or PP STRAP



INCLUDES 2 BATTERIES

**600 lbs Tension**

SPECIFICATIONS	
L x W x H	11.8" x 5.9" x 6.3"
WEIGHT	8.8 lbs.
BATTERY	14.8V-2.0 A/H LI-PO
MAX. TENSION	600 lbs.
TENSION SPEED	10.4 in/sec
SEALING/JOINT STRENGTH	Friction / 80% of Breaking
RECOMMENDED STRAP SIZE/THICKNESS	1/2" - 5/8" polypropylene or polyester / .019" - .030"



# SEMI AUTO BATTERY OPERATED TOOLS

## **B800** BATTERY POWERED FRICTION WELD TOOL

UP TO: 3/4 in. x .040 PET STRAP or PP STRAP



INCLUDES 2 BATTERIES

## 850 lbs Tension

SPECIFICATIONS	
L x W x H	11.4" x 5.5" x 6.5"
WEIGHT	8.4 lbs.
BATTERY	14.8V-3 A/H LI-PO
MAX. TENSION	850 lbs.
TENSION SPEED	5.9 in/sec
SEALING/JOINT STRENGTH	Friction / 80% of Breaking
RECOMMENDED STRAP SIZE/THICKNESS	5/8" - 3/4" polypropylene or polyester / .025" - .040"

## **B1000** BATTERY POWERED FRICTION WELD TOOL

UP TO: 3/4 in. x .050 PET STRAP or PP STRAP



INCLUDES 2 BATTERIES

## 1125 lbs Tension

SPECIFICATIONS	
L x W x H	12.4" x 5.5" x 7.2"
WEIGHT	8.4 lbs.
BATTERY	14.8V-3 A/H LI-PO
MAX. TENSION	1125 lbs.
TENSION SPEED	5.9 in/sec
SEALING/JOINT STRENGTH	Friction / 80% of Breaking
RECOMMENDED STRAP SIZE/THICKNESS	5/8" - 3/4" polypropylene or polyester / .035" - .050"

## **B-SERIES BATTERIES** BATTERY POWERED FRICTION WELD TOOL



B800 & B1000 BATTERIES	
PRODUCT CODE	B800BAT*
TYPE	LITHIUM
OUTPUT	14.8V 3.0AH

\*B800 works in B1000 tool



B600 & B1200 BATTERIES	
PRODUCT CODE	B600BAT/ B1200BAT
TYPE	LITHIUM POLYMER
OUTPUT	14.8V 2.0AH / 14.8V



B2000 BATTERIES	
PRODUCT CODE	B2000BAT
TYPE	LITHIUM ION
OUTPUT	36V 2.0 AH

## **B-SERIES CHARGERS** BATTERY POWERED FRICTION WELD TOOL



B800 & B1000 CHARGER	
PRODUCT CODE	400CHG*
POWER SUPPLY	60 Hz 80W
OUTPUT	16V 5A



B600 & B1200 CHARGER	
PRODUCT CODE	600CHG*
POWER SUPPLY	60 Hz 80W
OUTPUT	16.8V 5A



B2000 CHARGER	
PRODUCT CODE	2000CHG
POWER SUPPLY	60 Hz 20W
OUTPUT	14.4V - 36V 2A

CHARGE TIME IS JUST 20 MINUTES & THE BATTERY PROVIDES FOR APPROXIMATELY 200 CYCLES & A LIFE OF UP TO 2,000 CHARGES.

## **B-SERIES ACCESSORIES** OPTIONAL SUSPENSION BRACKETS



B800 & B1000  
Product Code: 190144  
FOR TOOL COUNTERBALANCER

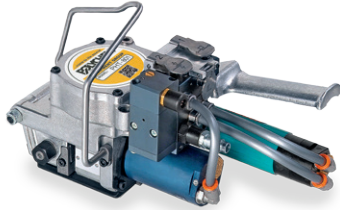


B600, B1200 & B2000  
Product Code: 190259  
FOR TOOL COUNTERBALANCER



# PNEUMATIC TOOLS

## **PHT801** PNEUMATIC STRAPPING TOOL UP TO: 3/4 in. x .040 PET STRAP or PP STRAP

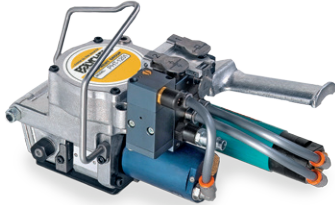


FOR STRAP FRICTION WELD SEAL (FLAT OR ROUND SURFACES)

## 850 lbs Tension

SPECIFICATIONS	
L x W x H	11.8" x 6" x 6.9"
WEIGHT	11.2 lbs.
PRESSURE RANGE	5.0 - 7 bar/70 - 99 psi
PRESSURE CONSUMPTION	14L/s - 29 cu ft/mi
MAX. TENSION	850 lbs.
TENSION SPEED	9 m/min
RECOMMENDED STRAP SIZE/THICKNESS	5/8", 3/4" polypropylene or polyester / .030" - .040"

## **PHT1201** PNEUMATIC STRAPPING TOOL UP TO: 3/4 in. x .055 PET STRAP



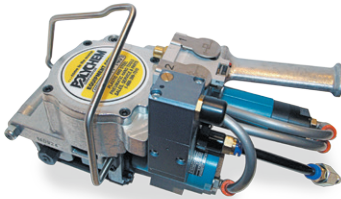
FOR STRAP FRICTION WELD SEAL (FLAT OR ROUND SURFACES)

## 1250 lbs Tension

SPECIFICATIONS	
L x W x H	11.8" x 6" x 6.9"
WEIGHT	11.2 lbs.
PRESSURE RANGE	5.0 - 7 bar/70 - 99 psi
PRESSURE CONSUMPTION	14L/s - 29 cu ft/mi
MAX. TENSION	1250 lbs.
TENSION SPEED	9 m/min
RECOMMENDED STRAP SIZE/THICKNESS	5/8", 3/4" polyester / .040" - .055"

• FOR POLYESTER STRAPPING ONLY

## **PHT1401** PNEUMATIC STRAPPING TOOL UP TO: 1 1/4 in. x .050 PET STRAP



FOR STRAP FRICTION WELD SEAL (FLAT OR ROUND SURFACES)

## 1280 lbs Tension

SPECIFICATIONS	
L x W x H	9.8" x 5.5" x 6.5"
WEIGHT	11.2 lbs.
AIR PRESSURE	6 - 7 bar/87 - 99 psi
MAX. TENSION	1280 lbs.
TENSION SPEED	4m/min
SEALING/JOINT STRENGTH	Friction / 80% of Break
RECOMMENDED STRAP SIZE/THICKNESS	1" - 1 1/4" polyester only / .040" - .050"

• FOR POLYESTER STRAPPING ONLY

## **PHT801** PNEUMATIC STRAPPING TOOL UP TO: 3/4 in. x .055 PET STRAP or PP STRAP



- When tensioning is not required.
- Ideal for baling applications
- Comes with integral suspension eyelet

SPECIFICATIONS	
L x W x H	9.8" x 5.1" x 4.7"
WEIGHT	5.7 lbs.
PRESSURE RANGE	4.5 - 7 bar/64 - 99 psi
SEALING/JOINT STRENGTH	Friction / 80% of Break
RECOMMENDED STRAP SIZE/THICKNESS	7/16", 1/2", 5/8", 3/4" polypropylene or polyester / .016" - .055"

## PNEUMATIC TOOL ACCESSORIES

Counterbalancer



CABLE 6.5' LONG

Filter-Regulator Lubricator



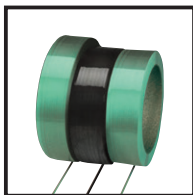
Cleaning Brush



SPECIFICATIONS	Counterbalancer		Filter-Regulator Lubricator	Cleaning Brush
PRODUCT CODE	400-0105	400-0237	200-0025	400-0011
WEIGHT	7 lbs.	7 lbs.	8 lbs.	N/A
SUPPORTS TOOL WEIGHTS UP TO	13 lbs.	24 lbs	N/A	N/A



# HIGH STRENGTH POLYESTER STRAP



**AAR - 53**

AAR Sizes Available

AAR SIZES CODED

PRODUCT CODE	DESCRIPTION							COILS PER PALLET	BOX/ BULK	WEIGHT PER PALLET
	PRODUCT FINISH	COLOR	CORE SIZE	NOMINAL WIDTH	NOMINAL THICKNESS	NOMINAL BREAK	FOOTAGE			
SIGNODE® COMPARABLE MACHINE GRADE LUMBER PET - FRICTION SEAL - LUBRICATED										
MPC2030	SMOOTH/WAX 2030	G	16 x 6	.62"	.030	1100	4,600	28	BULK	1400
MPC2035	SMOOTH/WAX/AAR 2040	G	16 x 6	.62"	.035	1400	4,000	28	BULK	1425
MPC2040	SMOOTH/WAX/AAR 2040H	G	16 x 6	.62"	.040	1600	4,000	28	BULK	1595
MACHINE GRADE LUMBER PET - HEAT SEAL - NON LUBRICATED										
MPC5835	SMOOTH AAR	G	16 x 6	.62"	.035	1400	4,000	28	BULK	1420
MPC583E	EMBOSSED AAR	G	16 x 6	.62"	.035	1400	4,000	28	BULK	1420
MPC5840	SMOOTH AAR	G	16 x 6	.62"	.040	1600	4,000	28	BULK	1595
MPC584E	EMBOSSED AAR	G	16 x 6	.62"	.040	1600	4,000	28	BULK	1625
SIGNODE® COMPARABLE MACHINE GRADE BRICK PET - FRICTION SEAL - LUBRICATED										
**MPC2036	SMOOTH/WAX 2036	G	16 x 6	.62"	.036	1300	4,000	28	BULK	1625
MPC2038	SMOOTH/WAX/AAR 2038	G	16 x 6	.62"	.038	1300	4,000	28	BULK	1700
MACHINE GRADE BRICK PET - HEAT SEAL - LUBRICATED - AAR										
MPC5839	SMOOTH / WAX / AAR	G	16 x 6	.62"	.039	1400	4,000	28	BULK	1590
POWER TOOL GRADE PET										
HPC581E	EMBOSSED	G	16 x 6	.62	.030	1100	4,600	28	BULK	1405
HPC58PT	SMOOTH/WAX	G	16 x 6	.62	.035	1400	4,000	28	BULK	1420
HPC583E	EMBOSSED	G	16 x 6	.62	.035	1400	4,000	28	BULK	1375
HPC5814	SMOOTH	G/B	16 x 6	.62	.035	1400	4,200	28	BULK	1440
HPC5815	SMOOTH/WAX	G	16 x 6	.62	.035	1400	4,200	28	BULK	1440
HPC5816	SMOOTH/WAX	G	16 x 6	.62	.040	1600	4,000	28	BULK	1560
HPC584E	EMBOSSED	G	16 x 6	.62	.040	1600	4,000	28	BULK	1565
HPC3440	SMOOTH/WAX/AAR 2220	G/B	16 x 6	3/4"	.040	1900	3,000	28	BULK	1480
**MPC344E	EMBOSSED/AAR	G	16 x 6	3/4"	.040	1900	3,000	28	BULK	1480
HPC344E	EMBOSSED/AAR	G	16 x 6	3/4"	.040	1900	3,000	28	BULK	1480
**MPC345E	EMBOSSED/AAR	G	16 x 6	3/4"	.050	2400	2,400	28	BULK	1480
HPC3450	SMOOTH/WAX/AAR 2225	G/B	16 x 6	3/4"	.050	2400	2,400	28	BULK	1480
HPC345E	EMBOSSED/AAR	G	16 x 6	3/4"	.050	2400	2,400	28	BULK	1480
HPC1040	SMOOTH/WAX/AAR 1040	G/B	16 x 6	1"	.040	2500	2,200	28	BULK	1450
HPC1050	SMOOTH/WAX/AAR 1050	G/B	16 x 6	1"	.050	3000	1,800	28	BULK	1505
HPC1440	SMOOTH/WAX/AAR 2680	G/B	16 x 6	1 ¼"	.040	3200	1,800	28	BULK	1540
HPC1450	SMOOTH/WAX/AAR 2625	G/B	16 x 6	1 ¼"	.050	4000	1,500	28	BULK	1540

\*SIGNODE® is a registered Trademark of Signode Industrial Group.

All bulk products must be purchased in full pallet quantities.

\*\* Non-stocking item

AVAILABILITY: We inventory many of our poly strapping items listed in our catalog; however we cannot assure every item or color we be on hand at the moment your place your order. In the event an item is not immediately available we will notify you and work to complete and ship your order as promptly as possible.

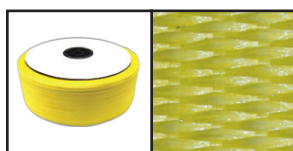


# HVY & EXHVY DUTY CORD STRAPPING

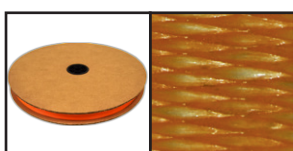


- Less expensive vs. steel strapping
- Safer to use, handle, and dispose
- Up to 4X lighter, easier to carry
- Clean, will not stain or rust
- Elastic memory keeps loads tight

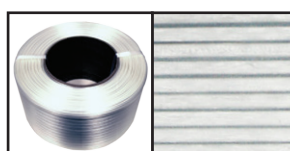
- Non-abrasive, non-marring
- Requires one tool to tension
- Can be hand tied in some cases
- Edge guards may not be needed
- AAR approved sizes available



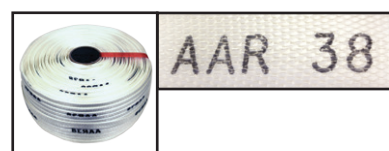
HEAVY DUTY WOVEN



EXTRA HEAVY DUTY WOVEN



COMPOSITE



## WOVEN CORD STRAPPING -HEAVY/EXTRA HEAVY DUTY

AAR SIZES CODED

PRODUCT CODE	DESCRIPTION						RECOMMENDED BUCKLE	COILS PER PALLET	COILS PER BOX	WEIGHT PER PALLET
	RC PACKAGING CODE	WOVEN	STD. COLOR	WIDTH	BREAK	FOOTAGE				
POLYESTER CORD										
PC55WX	55WHDWH	W	W	5/8"	2000	2000	SB58X15P	48	2	965
PC55WYO	P55WHD	W	O	5/8"	2000	2000	SB58X15P	48	2	1,058
PC60WX	60WXHDWH	W	W	3/4"	1800	1675	SB34HDP	36	2	830
PC60WXY	60WXHD	W	Y	3/4"	1800	1675	SB34HDP	36	2	830
PC65WQ	65WQHDDWH	W	W	3/4"	2400	1650	SB34XDP	48	2	1,100
PC65WQA*	65WQAAR	W	W	3/4"	2400	1650	SB34XDP	48	2	1,100
PC65WQO	65WQHD	W	O	3/4"	2400	1650	SB34XDP	48	2	1,100
PC100WX	100WXHD	W	W	1"	2250	660	SB1HDP	48	4	725
PC105WX	114WXHD	W	W	1 1/4"	3300	660	SB114XDP	48	4	700
PC105WXA*	114WXHDAAR	W	W	1 1/4"	3300	600	SB114XDP	48	4	715
PC105WXY	114WXHDY	W	Y	1 1/4"	3300	660	SB114XDP	48	4	700
PC105WX1	114WXHDL	W	W	1 1/4"	3300	1080	SB114XDP	48	2	915
PC150WHY	150WHDLS	W	Y	1 1/2"	4400	600	SB114XDP	48	4	770
PC150WXA*	150WXAAR	W	W	1 1/2"	5400	500	SB114XDP	48	4	750
PC150WYO	150WXHD	W	O	1 1/2"	5400	480	SB114XDP	48	4	750

All 1/2" - 1" Heavy/Extra heavy Duty is on a 3" x 5" core. All 1 1/4" and 1 1/2" is ribbon wound on a 3" core. Other sizes available. Exception is PC105WX1, which is on a 3" x 5" core.

## COMPOSITE CORD STRAPPING - HEAVY DUTY ALL COMPOSITE STRAP 8X8 CORE

PRODUCT CODE	DESCRIPTION						RECOMMENDED BUCKLE	COILS PER PALLET	COILS PER BOX	WEIGHT PER PALLET
	RC PACKAGING CODE	WOVEN	STD. COLOR	WIDTH	BREAK	FOOTAGE				
CC85	RC85	N/A	W	1X.045	1800	1640	SB1HDP	72	2	2220
CC89	RC89	N/A	W	1X.045	2700	1300	SB1HDP	72	2	2625
CC105	RC105	N/A	W	1.25X.055	3320	770	SB114XDP	72	2	1600
CC105A*	RC105A	NA	W	1.25X.055	3285	820	SB114XDP	72	2	1660

\* AAR Approved; must specify AAR to receive strapping with the required AAR38 printing and ID on packaging. Other sizes available.



# CLOSURES, TENSIONERS & DISPENSERS

## PHOSPHATE FINISHED BUCKLES FOR BONDED AND WOVEN CORD STRAP



SPECIFICATIONS					
PRODUCT CODE	RC PACKAGING CODE	STRAP SIZE	GAUGE	PACK	WEIGHT
SB1HDP	25MMHD	1"	.196	500	37 lbs
SB114XDP	32MMHD	1 1/4" - 1 1/2"	.275	250	46 lbs

## GALVANIZED FINISHED BUCKLES FOR COMPOSITE CORD STRAP



SPECIFICATIONS					
PRODUCT CODE	RC PACKAGING CODE	STRAP SIZE	GAUGE	PACK	WEIGHT
SB1HDG	25MMHDGALV	1"	.196	500	38 lbs
SB114XDG	32MMHDGALV	1 1/4" - 1 1/2"	.275	250	48 lbs

## HEAVY DUTY TENSIONERS

### TH26 HEAVY DUTY WINDLASS CORD TENSIONER



SPECIFICATIONS	
PROD. CODE	TH26
LENGTH	12"
STRAP SIZE	Up to 1 1/2"
STYLE	Heavy Duty Windlass
WEIGHT	4lbs

### TH325 HEAVY DUTY WINDLASS CORD TENSIONER



SPECIFICATIONS	
PROD. CODE	TT325
LENGTH	11"
STRAP SIZE	1/2" - 3/4"
STYLE	Heavy Duty Windlass
WEIGHT	5lbs

### TH375 EXTRA HEAVY DUTY WINDLASS CORD TENSIONER



SPECIFICATIONS	
PROD. CODE	TT375
LENGTH	11"
STRAP SIZE	3/4" - 1 1/2"
STYLE	Extra Heavy Duty Windlass
WEIGHT	7lbs

### THTB HEAVY DUTY MANUAL CORD TENSIONER



SPECIFICATIONS	
PROD. CODE	THTB
LENGTH	18 1/2"
STRAP SIZE	5/8" - 1 1/2"
STYLE	Woven and Composite
WEIGHT	4lbs

## CORNER PROTECTORS



Shorter pieces of EconoBoard® and EdgeArmor®



- Protects package edges from securement strapping
- Corner protectors evenly distribute strap tension over a wider surface area.
- Allows for "tighter" packaging
- Made from 100% recycled paper board and is 100% recyclable
- Sizes from 2" to 12" (50.8mm to 304.8mm)
- Specify EconoBoard® or EdgeArmor® (wrapped) Corner Protectors

## HEAVY DUTY DISPENSERS

PLEASE SPECIFY CORE SIZE:

**DSCD** for CORD  
for all 3"x5" Core  
Woven/Bonded  
and all 8" x 8" Core  
Composite Cord



**DSHD**  
for High Strength  
Polyester  
Strapping



# REPEAL THE STEEL

## Now More Than Ever, It's Time to Kick the Habit... The Steel Strapping Habit



**WARNING:** Steel strapping can be hazardous to your bottom line, your employees, your customers, and your products. Quitting steel strapping greatly reduces your risk of accidents and saves you money.

Steel strapping also presents a safety hazard all throughout its' life cycle; from carrying and loading the 100 lb coils to applying the strapping, removing the strapping and finally the discarding of the strapping.

In addition to steel strapping being a safety hazard, the cost of steel is on the rise with the US levying new and larger tariffs on imported steel allowing for domestic manufacturers to raise steel strap pricing across the board.

### HERE'S THE SPIEL ..... "POLYESTER THE BETTER SOLUTION"

Steel strapping is an older, less safe and more expensive technology.

Polyester strapping and cord, by all measures are superior products for the following reasons.

- First and foremost Polyester greatly reduces the lost time injuries and liability caused by the weight, sharp edges and ends of steel strapping
- Polyester is up to 4X lighter making it much easier and safer to handle
- Polyester longer length coils are labor saving - requiring less change time
- Polyester is cleaner and non-corrosive, it will not rust or stain products
- Polyester is non-abrasive and will not mar products
- Polyester has high impact resistance making it less likely to burst
- Polyester has "elastic memory" and will hold packages tighter
- Used Polyester is easier to discard or recycle
- Customers are demanding it. Many will no longer accept Steel Strapping on their premises.



Stained and Marred Damaged Product



Steel lacks elasticity when loads are compressed

To



Less Product Damage



Elastic Memory = Tighter Packages

**NOW MORE THAN EVER,  
IT'S TIME TO KICK THE HABIT ...**

**THE STEEL STRAPPING HABIT**



# CONVERTING FROM STEEL

## THESE INDUSTRIES STILL HAVE OPPORTUNITIES FOR CONVERSIONS

- Wood Truss Manufacturing
- Equipment Manufacturing
- All Types of Wood/Lumber/Panels
- Plastic Pipe
- Aluminum Ingots
- Ceramic Tile
- Wood Preservers
- Concrete Blocks
- Extruded Metal/Tubes
- Glass Sheets/Textiles/Fibers
- Truck, Car and Bus Body Manufacturers
- Brick Manufacturing
- Decorative Paver Stones
- Rail Car Securement\*

+ Plus many small/medium industrial shipping rooms still use steel strapping

\* Specific Polychem Polyester Plastic Strap Products are AAR Approved for TYPE IV Securement AAR 53

\* Specific Polychem Polyester Cord Products are AAR Approved for Type 1A Securement AAR 38

## TIPS TO HELP SELL THE PROGRAM



- 1) When selling the conversion ask your customer if they have a Safety Director who can participate in the discussions.
- 2) One of the biggest objections to converting is that steel strap feeds under the pallet easier. Our inexpensive Pallet Threader attaches to a broom stick and easily threads Polyester strapping under the pallet.
- 3) The cost of buying new tools for Polyester is often covered in 1 year's strap savings.

## SHOW ECONOMIC JUSTIFICATION

### Economic Justification

First determine your cost per foot for the steel product you're currently using and its polyester replacement

$$\frac{\text{Price/Coil}}{\text{Feet/Coil}} = \text{Cost Per Foot} \quad \text{Steel} \quad \text{Cost Per Foot} \quad \text{Polyester}$$

See strap specifications on back cover

## IT'S A WIN, WIN, WIN PROPOSITION

- 1) Distributors will be providing a superior performing product.
- 2) Customers will save money and experience a safer work environment.
- 3) The ultimate consumer will receive less damaged product and are less likely to injure themselves while unpacking and disposing the used steel.

**NOTE:** If a customer uses a pallet of steel each month, they are a good candidate for conversion to polyester strapping or woven and composite cord strapping.

# STEEL TO POLYESTER CONVERSION

STEEL SPECIFICATIONS		
SIZE	BREAK	FEET/COIL
3/8" x .017 RD	980	4710
3/8" x .020 RD	880	3930
1/2" x .017 RD	1305	3490
1/2" x .020 RD	1180	2940
1/2" x .023 RD	1340	2560
5/8" x .020 RD	1470	2360
5/8" x .023 RD	1670	2050
3/4" x .020 RD	1760	1960
3/4" x .023 RD	2010	1710
3/4" x .025 HT	2800	1570
3/4" x .029 HT	3350	1418
1-1/4" x .025 HT	4800	1034

POLYESTER SPECIFICATIONS			
PRODUCT NO.	SIZE	BREAK	FEET/COIL
5811	5/8" x .030	1100	3600
5814	5/8" x .035	1400	4200
58PT	5/8" x .035	1400	4000
583E	5/8" x .035	1400	4000
5816	5/8" x .040	1600	4000
584E	5/8" x .040	1600	4000
344E	3/4" x .040	1900	3000
HPC3450	3/4" x .050	2400	2400
HPC1040	1" x .040	2500	2200
HPC1050	1" x .050	3000	1800
HPC1440	1-1/4" x .040	3200	1800
HPC1450	1-1/4" x .050	4000	1500

## KEY ISSUES TO CONSIDER

It is up to the user to determine whether a product is safe and fit for a particular purpose and user's method of application.

### HOW WILL THE LOAD BE HANDLED AND SUPPORTED?



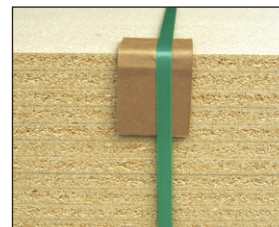
STABLE OR UNSTABLE



ON PALLETS OR NO PALLET



DULL CORNERS



SHARP CORNERS

### HOW WILL THE LOAD BE STORED? FOR HOW LONG?



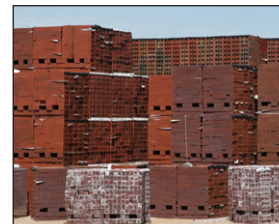
COVERED OUTDOORS



UNCOVERED OUTDOORS



INDOORS IN A CONTROLLED ENVIRONMENT



TEMPERATURE EXTREMES  
SOUTHERN HEAT/NORTHERN FROST

### HOW WILL THE LOAD BE TRANSPORTED?



OPEN TRUCK



CLOSED TRUCK



OPEN RAIL CAR



CLOSED RAIL CAR

\*Every application varies, testing must be done thoroughly prior to converting.  
\*American Association of Railroad Rules may apply.

\*Strapping should never be used as a handle.  
\*Galvanized coated buckles should be used with composite cord strapping.  
\*Phosphate coated buckles should be used with woven cord strapping.

**Caution:** Always proceed with caution. It is up to the user to determine if the load is safe.

**Warranty:** Seller warrants that the products sold herein will conform to Seller's specifications and will be free of defects in workmanship and materials for a period of one (1) year from the date of production. EXCEPT AS EXPRESSLY STATED HEREIN, SELLER MAKES NO REPRESENTATIONS OR WARRANTIES, EITHER EXPRESS OR IMPLIED AND EXPRESSLY DISCLAIMS ALL WARRANTIES REGARDING THE MERCHANTABILITY OR FITNESS FOR A PARTICULAR PURPOSE OF THE PRODUCTS DESCRIBED HEREIN. The equipment and procedures utilized to apply the product and environmental conditions are among the factors which may adversely affect the performance of the product. It is essential that the user evaluate whether the product is fit for a particular purpose and user's method of application.



6277 HEISLEY ROAD  
MENTOR, OHIO 44060  
(440) 357-1500  
FAX (440) 352-9553

WEST COAST DISTRIBUTION CENTER  
11920 ALTAMAR PLACE  
SANTA FE SPRINGS, CA 90670  
(562) 903-4576  
FAX (562) 903-4579  
1-800-899-0822

CALL TOLL FREE 1-800-548-9557  
www.polychem.com

