

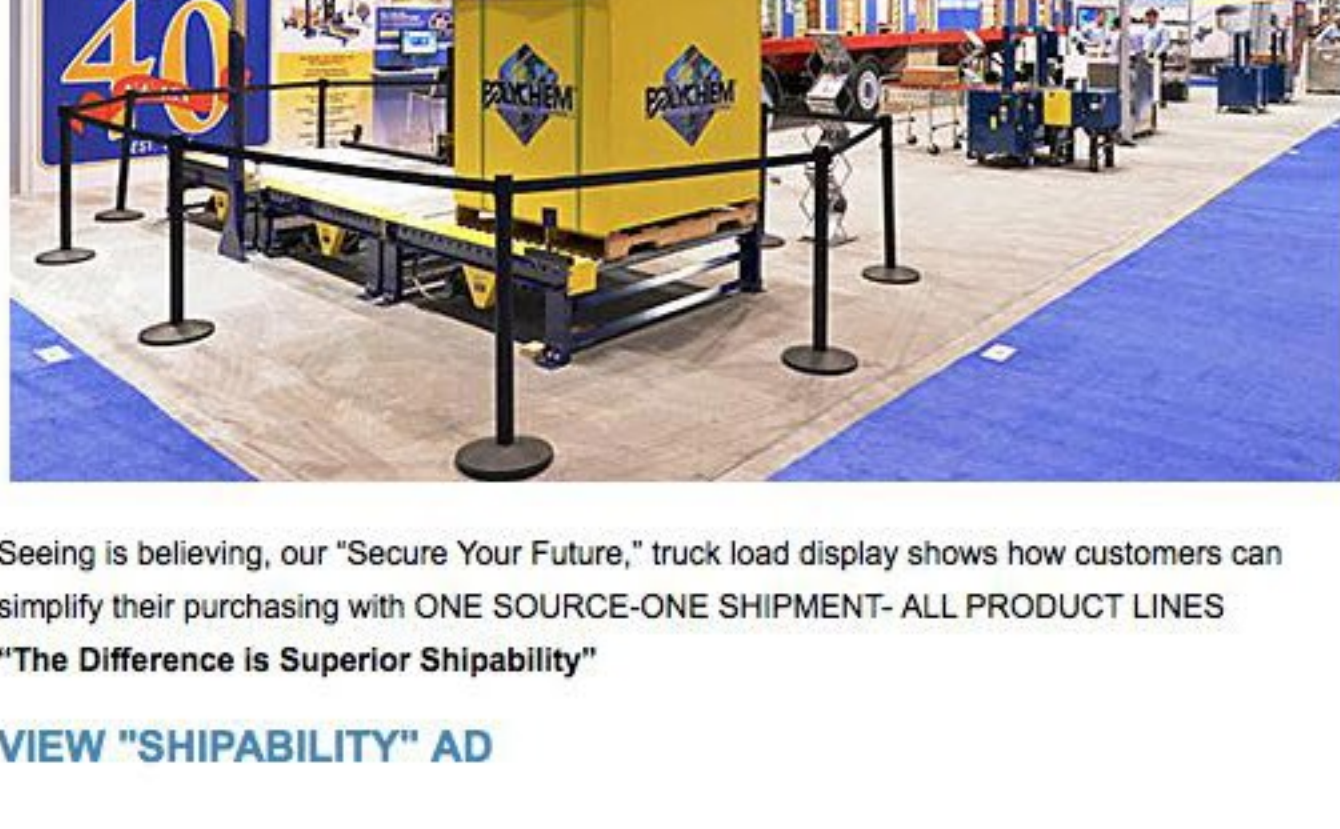
Volume 10, Issue 1 / December 2014

**Polychem News You Can Use**



**HAPPY HOLIDAYS FROM POLYCHEM**

Polychem returns from a successful PACK EXPO SHOW in Chicago and would like to thank all of our customers that made the show a huge success! We tried something new and exciting this year by bringing our "Superior Shipability" Strategy to life via dropping a full size 48' trailer into our booth space and displaying the contents of our full Securement Packaging Line.



Seeing is believing, our "Secure Your Future," truck load display shows how customers can simplify their purchasing with ONE SOURCE-ONE SHIPMENT- ALL PRODUCT LINES "The Difference is Superior Shipability"

[VIEW "SHIPABILITY" AD](#)

**Products Highlighted at the Show**

The B600 fully automatic strapping tool operates with the **pressing of just one button**. Show attendees that were given the opportunity to try the tool were pleased with the simplicity and ease of operation provided by this newest Polychem addition.



**B600** **POLYCHEM** **INTRODUCING**

**THE NEXT GENERATION FULLY AUTOMATIC PLASTIC STRAPPING TOOL**

One Button Operation  
Lithium Polymer Battery  
DC Brushless Motors

[View PDF](#)  
[View Video](#)

- Easy to Operate • More Tension
- More Speed • More Value

A Polychem/OMS Integrated System was featured. Polychem can integrate conveyors, equipment, package manipulation, tracking, etc. Pictured is a Front Drive Side Seal machine with an all electric rack-driven indexing head.



**FEATURES**

**Front Drive**

- Dual Speed Bayonet

**Indexing Head**

- No Air/Smoother Transition

**Electrical Cabinet**

- Attached
- Compact
- HMI Stationary

**Fast and Easy Installation**



**BUILT IN AMERICA**

Also featured at the show were two new Polychem arch strapping machines. The PC1000SST stainless side seal machine for fish/food applications was a huge hit for distributors who have customers in those businesses. The PC1000SST can strap loose loads with ice, wood chips, etc., without the concern of ruining the strapping head or inner workings of the machine. This side seal machine also offered in a non stainless steel Model the PC1000S.

- **FAST & EASY to OPERATE/ UP TO 60 STRAPS PER MINUTE**
- **SPLASH DOWN MACHINE/304 STAINLESS STEEL**
- **BUILT IN HEATER KEEPS MOISTURE OUT**



**PC1000SST** **POLYCHEM**

**STAINLESS STEEL AUTOMATIC STRAPPING MACHINE**

UP TO **60 STRAPS PER MINUTE!**

**304 STAINLESS STEEL SPLASH DOWN MACHINE (P 54 RATING)**

For Meat, Fish and Poultry Markets  
German DC Brushless Motors  
Easy to Operate

[FOR MORE DETAILS VIEW PDF](#)

The Polychem PC PRO fully automatic conveyor machine had its debut at the show can perform up to 60 straps per minute.

- **USER FRIENDLY/FULL COLOR TOUCH SCREEN CONTROLS w/DIAGNOSTICS AND EFFICIENCY LOG**
- **VARIABLE SPEED CONVEYOR BELT/YASHAWA AC SERVO MOTORS**
- **FULL INTEGRATION WITH EXISTING LINES/LOW MAINTENANCE**



**PC PRO** **POLYCHEM**

**AUTOMATIC STRAPPING MACHINE**

UP TO **60 STRAPS PER MINUTE!**

Full Feature Machine with a Basic Price  
User Friendly Design Full Colored Touch Screen Controls  
Servo Technology Provides Ultimate Reliability  
One Piece Track

[FOR MORE DETAILS VIEW PDF](#)

And last but not least; Cornerboard...Both EconoBoard® & EdgeArmor®, are your "Ace in the Hole" to help optimize your transportation costs.



[Download Polychem's FULL LINE CATALOG 2015](#)

**FULL LINE CATALOG** **POLYCHEM** **SECURE YOUR FUTURE**

**INTRODUCING**

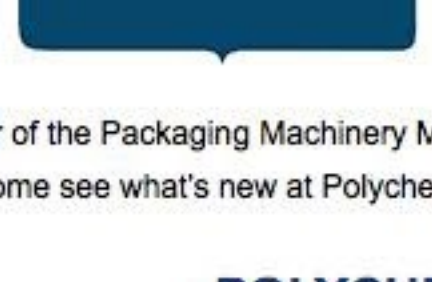
**POLYPROPYLENE** **POLYESTER** **TOOLS**

**CORD** **EDGE & CORNER PROTECTION BOARD**

**DISPENSERS** **CLOSURES** **MACHINES**

[WWW.POLYCHEM.COM](http://WWW.POLYCHEM.COM)

Truckloads of profit making opportunities all available from one source! Polychem looks forward to exhibiting at PACK EXPO LAS VEGAS, September 28-30, 2015 Las Vegas Convention Center; Booth S6338



Polychem is a member of the Packaging Machinery Manufacturers Institute. Come see what's new at Polychem!



**POLYCHEM: Celebrating 40 Years in Business**

**Secure Your Future®**